

# Install Downpipe

Marley downpipes are designed to be impact resistant and very simple to install yourself, which means they are ideal for use around the home. Marley downpipes are also suitable for the collection of rainwater for drinking purposes. For more technical information on downpipe installation click [here](#).



## TOOL'S YOU'LL NEED:

Ladder  
(or scaffold if required)



Nails or Screws



Measuring tape



Drop cloth



Drill



Pencil



Marley  
MCS<sup>®</sup> Solvent Cement



Builders level



Hack saw  
(fine tooth PVC saw)



String line / Chalk line





---

## Step 1 PLANNING

Before installing your downpipes you will need to choose your downpipe profile and also work out the components and quantities required. Consider whether you simply want to match the existing downpipes or select a new look or capacity.

Refer to Pg 3 and 4 of the [Marley DIY Easy Installation Guide](#) for assistance with planning and quantifying or visit your local building or plumbing merchant for further advice.



---

## Step 2

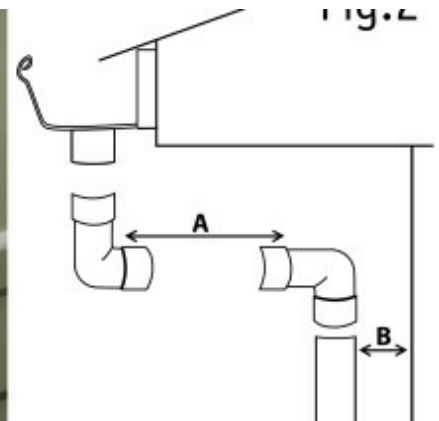
Install expansion outlet as per spouting installation instructions.



---

### Step 3

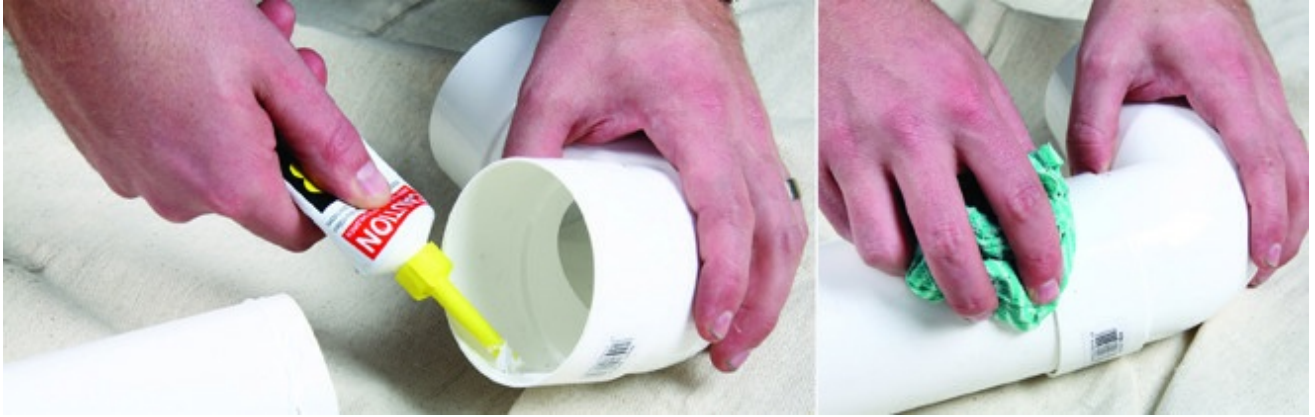
Connect downpipe bend to expansion outlet using a screw to hold bend in place. Do not solvent cement bend to outlet.



---

### Step 4

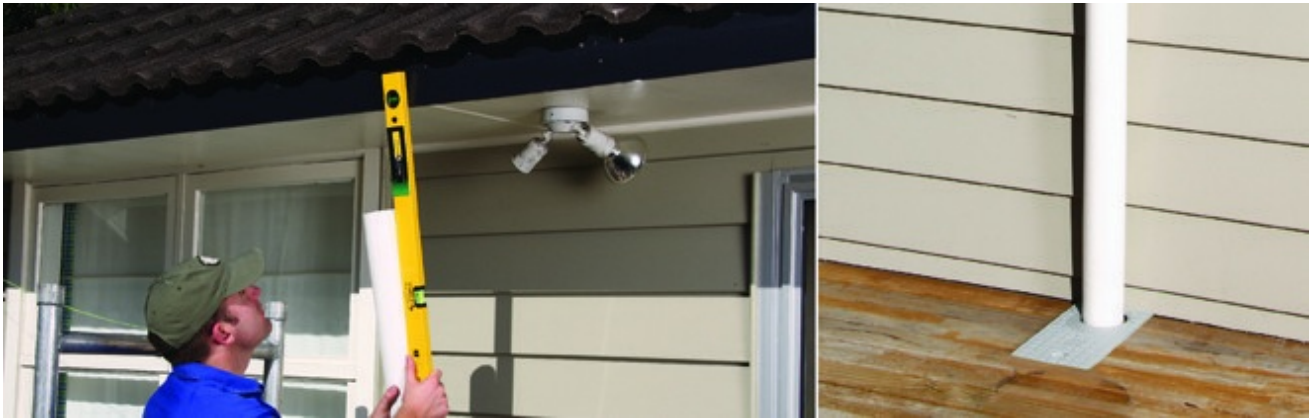
Determine the offset length (A) using Figure 2 allowing for depth of socket and taking into consideration the downpipe bracket distance from the wall (B). Cut downpipe as per measurements.



---

## Step 5

Solvent cement all remaining elbows to downpipe on ground, before completing offset installation.



---

## Step 6

Use a level or plumb line to mark where the downpipe will sit against the wall. Ensure brackets are spaced no more than 1.2m apart.



---

### Step 7

Connect downpipe to access pit, surface drainage or stormwater outlet.



---

### Step 8

Ensure brackets are secured with at least two stainless steel screws, so the downpipe can be removed for cleaning if necessary. Note – Marley spouting and downpipes are not designed for a concealed system or for use in wall cavities.





---

## Step 9

Check project is complete and joints are clean.

[Previous](#) [Next](#)